



Version 1.0.1.11

FaxCore Konica Minolta Connector Installation and Setup Guide

Table of Contents

Disclaimers.....	3
Support	4
U.S. & Europe.....	4
Asia Pacific.....	4
System Requirements & Prerequisites	5
Server Requirements	5
Installing FaxCore Konica Minolta Connector	7
Registering FaxCore Connector Applications on the MFP	9
Run FaxCore Konica Minolta Connector Setup Application.....	9
Manage Applications on the MFP	11
Changing Scanned Output File Type, Resolution and Color Mode	12
Native Connector.....	12
Scan Browser Connector.....	13

Disclaimers

FaxCore and FaxCore ev5 are registered trademarks of FaxCore, Inc. Windows is a registered trademark of Microsoft Corporation. All other trademarks are the property of their respective owners.

Support

FaxCore customers are encouraged to purchase a FaxCore Support Contract which provides them with unlimited telephone, email and web based product support from Monday to Friday 8.00 am to 5.00 pm Mountain time (GMT -7). FaxCore Partners can also provide on-site support and training when needed. FaxCore Support Contract holders are entitled to all FaxCore product service packs and upgrades at no additional charge.

Web Support: www.faxcore.com

This site contains technical information as well as a list of frequently asked questions.

U.S. & Europe

Email Support: Email support is available at support@faxcore.com

Phone Support: FaxCore support technicians can be reached at +1 (720) 870 2900

Asia Pacific

Email Support: Email support is available at support@faxcore.com.my

Phone Support: FaxCore support technicians can be reached at +60 (3) 3324 3226

System Requirements & Prerequisites

Server Requirements

FaxCore Konica Minolta Connector must be installed on a working and running FaxCore ev5 server. The connector **does not support FaxCore 2007 installations**. Upgrade to FaxCore ev5 prior to installing the connector.

MFP Requirements (Web Browser Applications)

<i>b i z h u b C 652, C 552, C 452, C 652D S , C 552D S</i>	<i>b i z h u b 751, 601</i>
<i>b i z h u b C 360, C 280, C 220</i>	<i>b i z h u b 501, 421, 361</i>
<i>b i z h u b C 6 5 0 , C 5 5 0 , C 4 5 1</i>	<i>b i z h u b 423, 363, 283, 223</i>
<i>b i z h u b C 353, C 253, C 203</i>	<i>b i z h u b 652, 552</i>
<i>b i z h u b C 754, C 654</i>	
<i>* b i z h u b C 554, C 454, C 364, C 284, C 224</i>	

THIS LIST IS ACCURATE AT TIME OF PUBLISHING; SUPPORT FOR THE MFP WEB BROWSER AMONG MFP MODELS IS SUBJECT TO CHANGE WITHOUT NOTICE.

* UPCOMING IN SUMMER OF 2012

There are two additional items needed from Konica Minolta in order for this the connector to work:

LK-101 v3	i-Option License Kit (Web Browser)	A0PD01H9
UK-204	2 GB Memory Upgrade Kit (for i-Option)	A4MHWY1

Note: If Fiery Controller is installed with the MFP, both network controllers on the MFP and the Fiery Controller must be connected to the network with separate LAN IP addresses.

MFP Requirements (Native Open API)

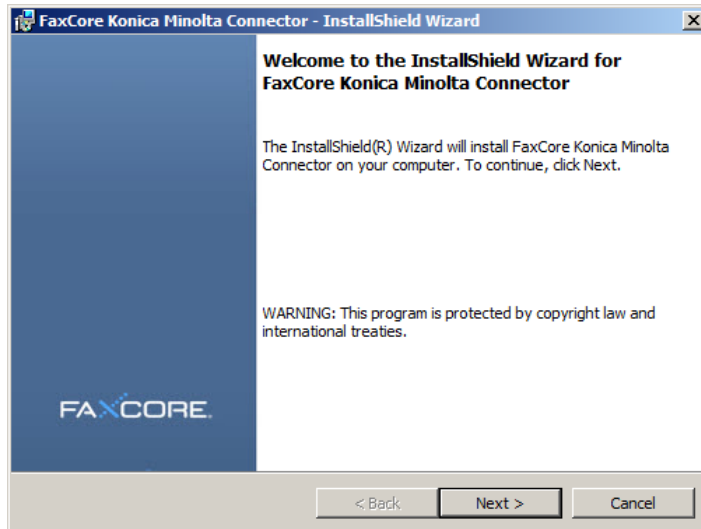
bizhub C652, C552, C452, C652DS, C552DS	bizhub 751, 601
bizhub C360, C280, C220	bizhub 501, 421, 361
bizhub C650, C550, C451	bizhub 423, 363, 283, 223
bizhub C353, C253, C203	bizhub 750, 600 **
bizhub C450, C351, C352, C250, C252 **	bizhub 500, 420, 360 **
bizhub C35	bizhub 42, 36
bizhub C754, C654	bizhub 652, 552
bizhub C554, C454, C364, C284, C224 ***	

REFER TO THE MFP FIRMWARE COMPATIBILITY CHART AVAILABLE FROM THE BEST SITE FOR DETAILS.
** THESE MODELS SUPPORT THE INITIAL VERSION OF OPENAPI THROUGH A SPECIAL ROM ONLY. THIS LIST IS SUBJECT TO CHANGE.

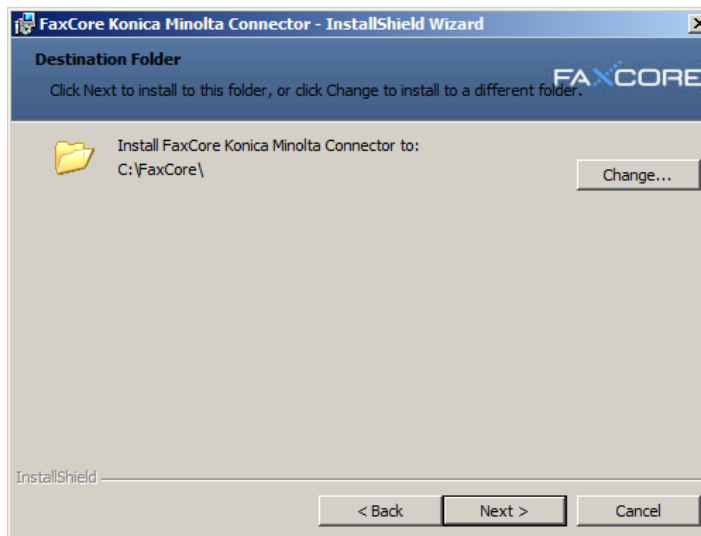
*** UPCOMING IN SUMMER OF 2012.

Installing FaxCore Konica Minolta Connector

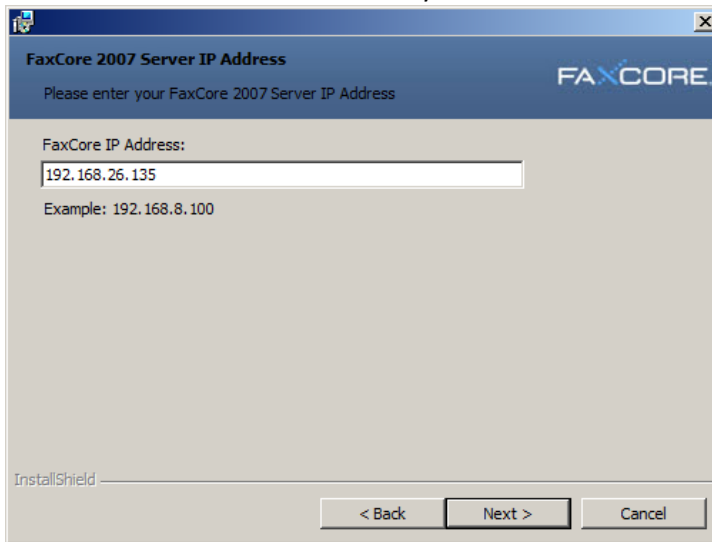
1. Run *FaxCore_KM_Connector.exe*.



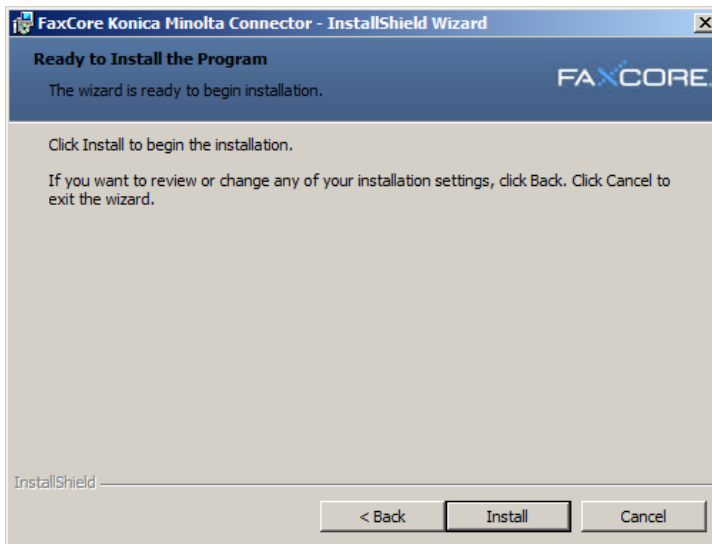
2. Follow the on screen instruction until the “**Destination Folder**” screen and verify the location of your FaxCore root install folder.



- Next you will be prompted for the FaxCore server's IP Address. The installer automatically detects the server IP address. Verify the IP address is correct and continue.



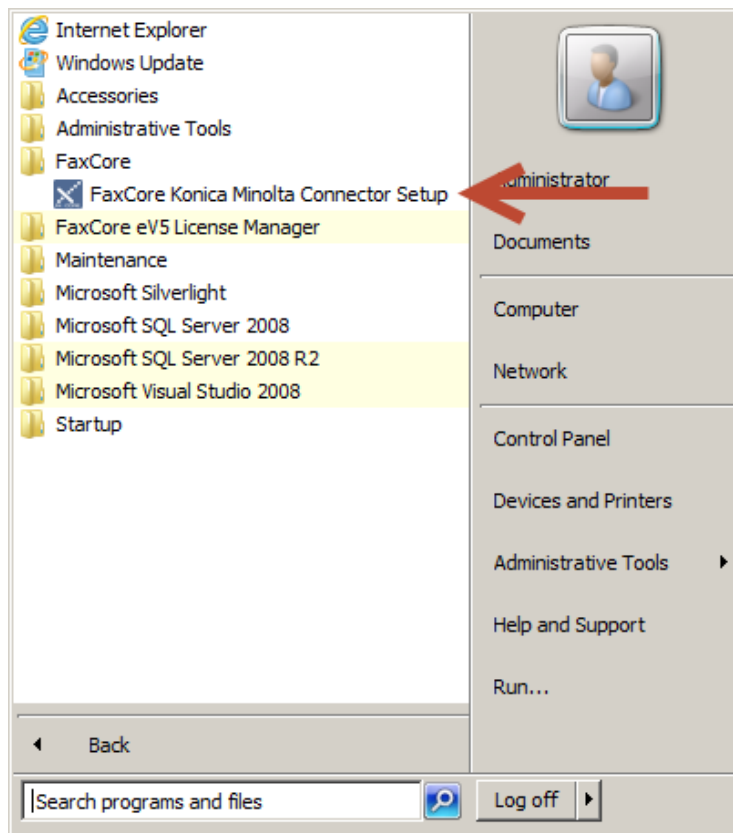
- Finally, select "Install" to begin the install process.



Registering FaxCore Connector Applications on the MFP

Run FaxCore Konica Minolta Connector Setup Application

1. When the installation process is completed, click on **“Start” → “All Programs” → “FaxCore” → “FaxCore Konica Minolta Connector Setup”**



2. Start by entering the “**IP Address**” and the admin “**Password**” of the MFP you want to connect to. You have the option to “**Register Apps**”, “**Manage Apps**” or view the “**MFP Info**”.

FaxCore Konica Minolta Connector Setup

Help

MFP Information

MFP IP Address 192.168.146.133 Search MFPs

Password

Register Apps Manage Apps MFP Info

Select Apps to Register

☐ FaxCore (Scan Browser) ☐ FaxCore Inbox (Pull Print Browser)

☐ FaxCore Basic (Native)

FaxCore Information

FaxCore IP 192.168.146.1

MFP Node/Username

Register

Ready

3. To register applications, select the applications you want to register on the “Register Apps” page, verify the FaxCore server’s IP address and enter the “MFP Node/Username” (for FaxCore Browser based applications, this field is used solely as reference to the identity of the registered MFP). However, if you’re registering the FaxCore Basic (Native) application, this field must match the FaxCore username that the MFP will use to authenticate against FaxCore.
4. When ready, click on the “**Register**” button.
5. You can now access the applications from the MFP. For more information, refer to [FaxCore Konica Minolta Connector User Guide](#).

Manage Applications on the MFP

The “**Manage Apps**” tab allow you to view and delete registered FaxCore applications on the MFP.

The screenshot shows the 'FaxCore Konica Minolta Connector Setup' window. The 'Manage Apps' tab is selected. The 'MFP Information' section contains fields for 'MFP IP Address' (192.168.146.133) and 'Password' (masked with dots), along with a 'Search MFPs' button. Below this is a tabbed interface with 'Register Apps', 'Manage Apps' (active), and 'MFP Info'. The 'Manage Apps' tab displays an 'Application List' table with three rows: 'FaxCore' (Scan Browser), 'FaxCore Inbox' (PullPrint Browser), and 'FaxCore Basic' (Scan Type-S). The 'FaxCore Basic' row is highlighted. To the right of the table are 'Refresh' and 'Delete' buttons. The status bar at the bottom left shows 'Ready'.

FaxCore Konica Minolta Connector Setup

FAXCORE

Help

MFP Information

MFP IP Address: 192.168.146.133

Password:

Search MFPs

Register Apps | **Manage Apps** | MFP Info

Application List

No	Name	Application Type
2	FaxCore	Scan Browser
3	FaxCore Inbox	PullPrint Browser
4	FaxCore Basic	Scan Type-S

Refresh

Delete

Ready

Changing Scanned Output File Type, Resolution and Color Mode

Native Connector

1. To change the output file type, resolution and color mode for the FaxCore Native Connector, using a text/xml editor (i.e. Notepad) edit the **OAPISetup.exe.config** file located in **<drive:>\FaxCore\OAPIService** directory prior to registering the connector on the MFP.

Modify the appropriate values in the following section of the file and save the file:

```
<OAPISetup.Properties.Settings>
  <!--
    Configure Default Scan Output File Type for Native
    Connector. Accepted values are:
    - PDF
    - TIFF
  -->
  <setting name="OutputFileType" serializeAs="String">
    <value>PDF</value>
  </setting>
  <!--
    Configure Default Scan Resolution. Accepted values are:
    - dpi200x100
    - dpi200x200
  -->
  <setting name="ResolutionType" serializeAs="String">
    <value>dpi200x200</value>
  </setting>
  <!--
    Configure Default Scan Color Type. Accepted values are:
    - FullColor
    - Black
    - BiColor
    - GrayScale
    - MonoColor
  -->
  <setting name="ColorType" serializeAs="String">
    <value>Black</value>
  </setting>
</OAPISetup.Properties.Settings>
```

2. Relaunch the “**FaxCore Konica Minolta Connector Setup**” to register or reregister the “**FaxCore Basic (Native)**” connector on the MFP to reflect the changes made to the configuration file.

Scan Browser Connector

1. To change the output file type, resolution and color mode for FaxCore Scan Browser Connector, using a text/xml editor (i.e. Notepad) edit the **web.config** file located in **<drive:>\FaxCore\web\OAPI37** directory prior to registering the connector on the MFP.

Modify the appropriate values in the following section of the file and save the file:

```
<OAPI37.Properties.Settings>
  <!--
  Configure Default Scan Output File Type. Accepted values are:
  - Pdf
  - Tiff
  -->
  <setting name="FileType" serializeAs="String">
    <value>Pdf</value>
  </setting>
  <!--
  Configure Default Scan Color Type. Accepted values are:
  - FullColor
  - Black
  - BiColor
  - GrayScale
  - MonoColor
  -->
  <setting name="ColorType" serializeAs="String">
    <value>Black</value>
  </setting>
  <!--
  Configure Default Scan Resolution. Accepted values are:
  - Dpi200x100
  - Dpi200x200
  -->
  <setting name="ResolutionType" serializeAs="String">
    <value>Dpi200x200</value>
  </setting>
</OAPI37.Properties.Settings>
```